



COURTS OF CANTERBURY  
PORT PERRY

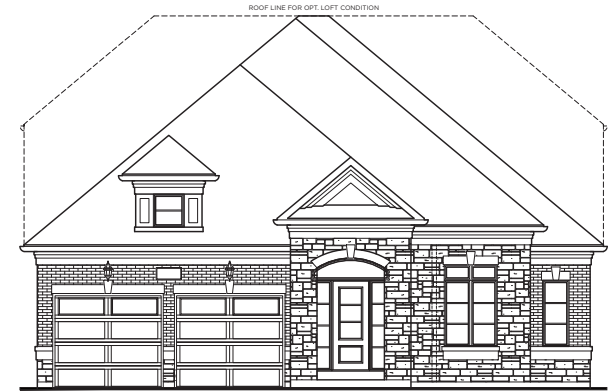
The  
**VIRGINIA**

Elevation A, B & C 1669 Sq. Ft.  
Elevation A, B & C Loft 2290 Sq. Ft.

50'  
50-06



ELEVATION A



ELEVATION B

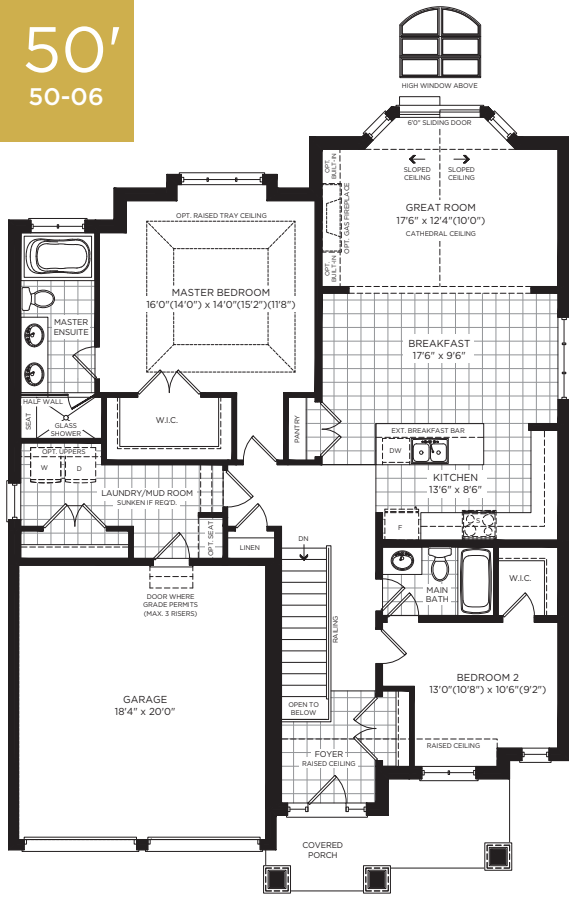


ELEVATION C

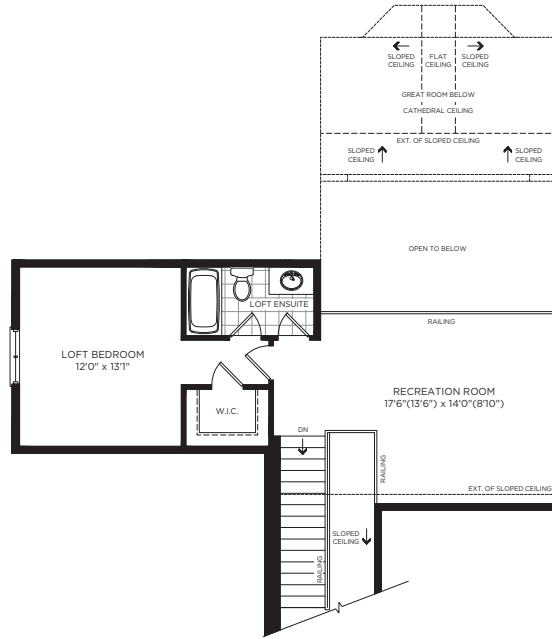


Builder reserves the right to substitute materials for equal or better quality. Prices, any lot premiums, features and any applicable incentives referred to are subject to change without notice. Lot sizes, square footages and room dimensions are approximate and are subject to change without notice. Please refer to Schedule 'B' and 'C' of the agreement of purchase and sale for full details. Renderings and furniture layouts are Artist's concept. Furniture not included. Courts of Canterbury. August 2020. E. & O.E.

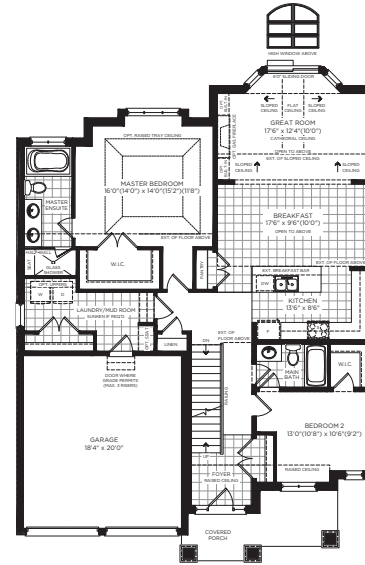
50'  
50-06



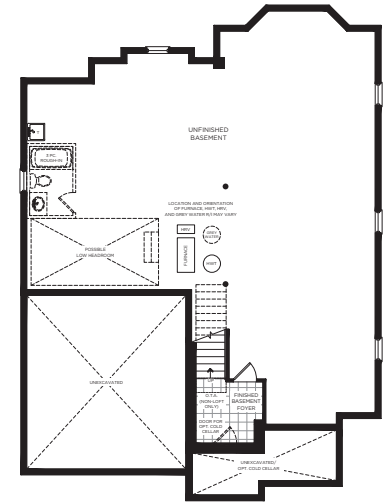
GROUND FLOOR, ELEVATION A



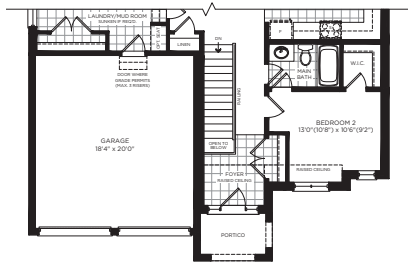
OPT. LOFT, ELEVATION A, B & C



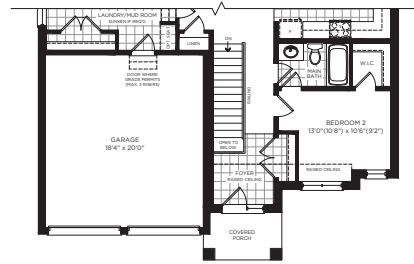
OPT. GROUND FLOOR LOFT,  
ELEVATION A



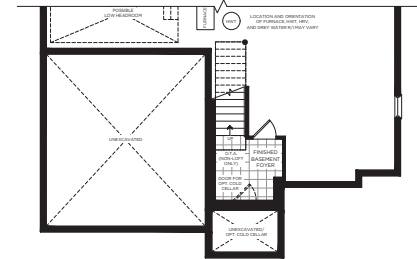
BASEMENT, ELEVATION A



GROUND FLOOR, ELEVATION B  
(SIMILAR FOR OPT. LOFT  
GROUND FLOOR, ELEVATION B)



GROUND FLOOR, ELEVATION C  
(SIMILAR FOR OPT. LOFT  
GROUND FLOOR, ELEVATION C)



BASEMENT, ELEVATION B & C



Builder reserves the right to substitute materials for equal or better quality. Prices, any lot premiums, features and any applicable incentives referred to are subject to change without notice. Lot sizes, square footages and room dimensions are approximate and are subject to change without notice. Please refer to Schedule 'B' and 'C' of the agreement of purchase and sale for full details. Renderings and furniture layouts are Artist's concept. Furniture not included. Courts of Canterbury. August 2020. E. & O.E.

The  
**VIRGINIA**  
Elevation A, B & C 1669 Sq. Ft.  
Elevation A, B & C Loft 2290 Sq. Ft.